



## HTS-25F



Product Model: HTS-25F

### Features:

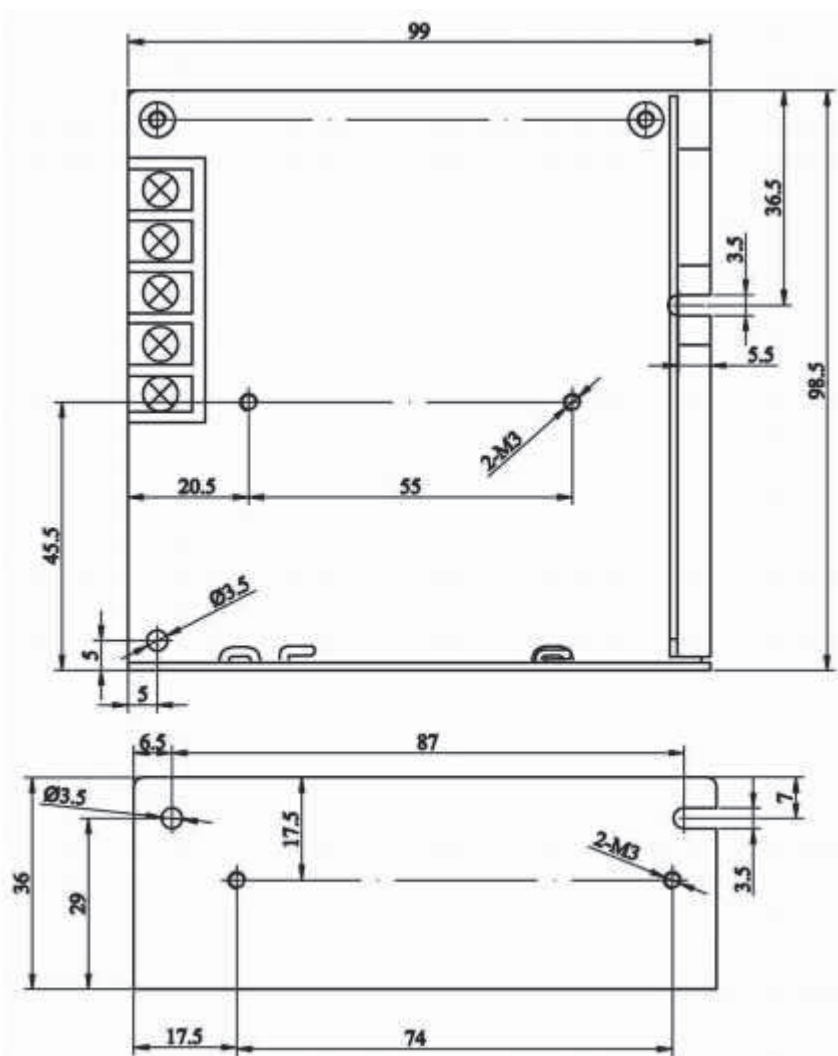
- Universal Input 85 to 264 VAC
- EMI Meets EN55022(CISPR22) Class B
- Low Power Consumption
- Approvals: UL/ CUL/ TUV/ CB/ CE
- Protections: Over Load/ Over Voltage  
Short Circuit
- 100% Full Load Burn-in Test
- 2 Years Warranty
- Case: 401 Size: 99x98.5x36mm

Input Voltage Range.....	85~264VAC; 120~370VDC
Input Frequency.....	47-63Hz
Inrush Current.....	Cold Start, 15A/ 115VAC, 25A/ 230VAC
Output Adjustment Range.....	±10% Rated Output Voltage
Line Regulation.....	≤ 0.5%
Output Over Load Protection.....	110%~150% Hiccup Mode, Auto-recovery
Output Over Voltage Protection.....	115%~135% Rated Output Voltage
Output Short Circuit Protection.....	.Hiccup Mode, Auto-recovery
Rise, Hold Up Time.....	50mS, 20mS at Full Load (Typical)



Hi-pot Isolation.....I/P-O/P: 3KVAC, I/P-FG: 1.5KVAC, O/P-FG: 0.5KVAC  
 Operating Temperature Range..... 0 °C to +50°C @100%, -10°C@ 80%, +60 @60% Load  
 Storage Temperature Range..... -40°C to +85°C, 0 to 95%RH (Non-Condensing)  
 Safety Standards.....UL60950-1, TUV EN60950-1  
 EMC standards.....EN55022 class B, EN61000-3-2,3  
 EN61000-4-2,3,4,5,6,8,11,ENV50204  
 Cooling Method.....Free Air Cooling Convection

Product model	DC output	Load regul.	R&N	Efficiency
HTS-25F-5	5V, 0~5A	1%	50mV	73%
HTS-25F-12	12V, 0~2.1A	0.5%	100mV	77%
HTS-25F-15	15V, 0~1.7A	0.5%	100mV	78%
HTS-25F-24	24V, 0~1.1A	0.5%	100mV	81%





## HTS-40F



Product Model:HTS-40F

### Features:

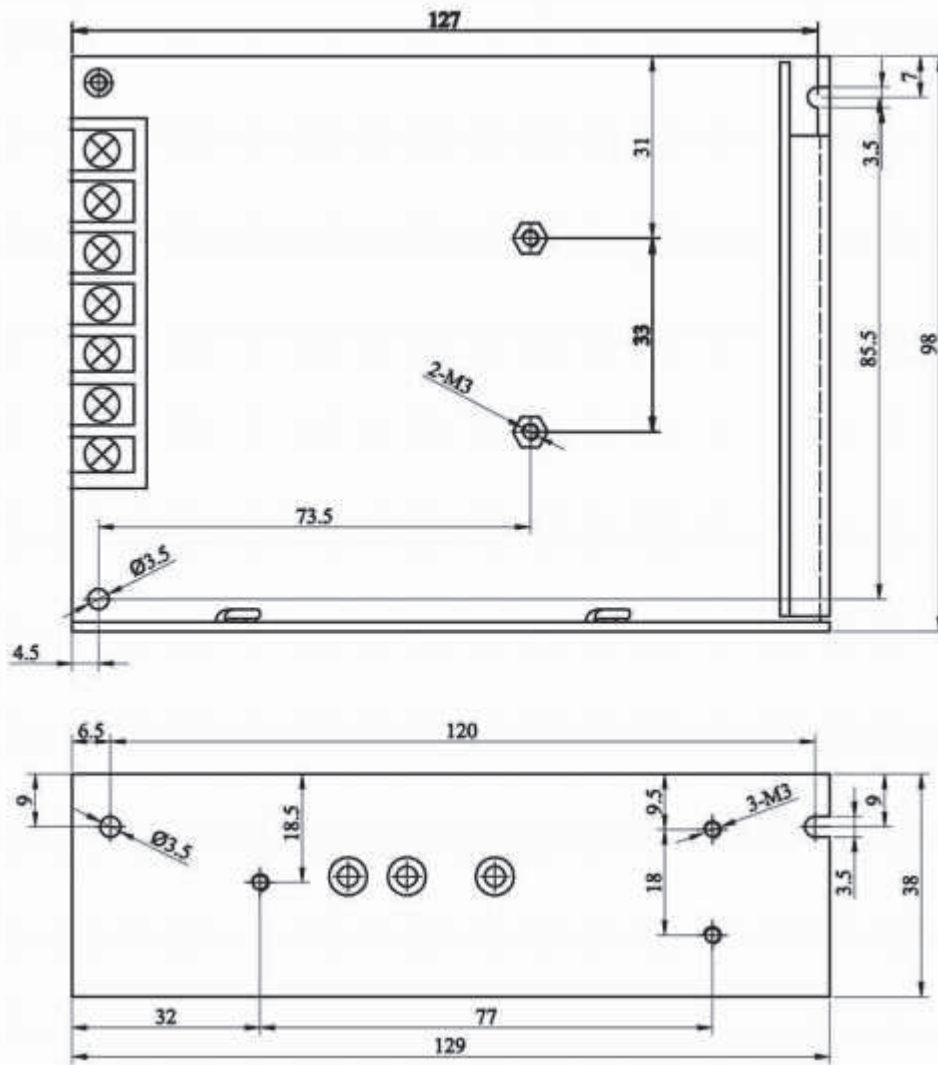
Universal Input 85 to 264 VAC  
EMI Meets EN55022(CISPR22) Class B  
Low Power Consumption  
Approvals: UL/ CUL/ TUV/ CB/ CE  
Protections: Over Load/ Over Voltage  
Short Circuit  
100% Full Load Burn-in Test  
2 Years Warranty  
Case: 402 Size: 129x98x38mm

Input Voltage Range.....85~264VAC; 120~370VDC  
Input Frequency.....47-63Hz  
Inrush Current.....Cold Start, 15A/ 115VAC, 25A/ 230VAC  
Output Adjustment Range.....  $\pm 10\%$  Rated Output Voltage  
Output Over Load Protection..... 110%~150% Hiccup Mode, Auto-recovery  
Output Over Voltage Protection..... 115%~135% Rated Output Voltage  
Output Short Circuit Protection..... Hiccup Mode, Auto-recovery



Rise, Hold Up Time..... 50mS, 20mS at Full Load (Typical)  
Hi-pot Isolation.....I/P-O/P: 3KVAC, I/P-FG: 1.5KVAC, O/P-FG: 0.5KVAC  
Operating Temperature Range..... 0°C to +50°C @ 100%, -10°C @80%, +60°C@ 60% Load  
Storage Temperature Range..... -40°Cto +85°C , 0 to 95%RH (Non-Condensing)  
Safety Standards.....UL60950-1, TUV EN60950-1  
EMC standards.....EN55022 class B, EN61000-3-2,3  
EN61000-4-2,3,4,5,6,8,11,ENV50204  
Cooling Method.....Free Air Cooling Convection

Product model	DC output	Load regul.	R&N	Efficiency
HTS-40F-5	5V, 0~8A	1%	75mV	74%
HTS-40F-12	12V, 0~3.5A	0.5%	100mV	78%
HTS-40F-15	15V, 0~2.8A	0.5%	100mV	79%
HTS-40F-24	24V, 0~1.8A	0.5%	100mV	81%





## HTS-60F



Product Model: HTS-60F

### Features:

- Universal Input 85 to 264 VAC
- EMI Meets EN55022(CISPR22) Class B
- Low Power Consumption
- Approvals: UL/ CUL/ TUV/ CB/ CE
- Protections: Over Load/ Over Voltage  
Short Circuit
- 100% Full Load Burn-in Test
- 2 Years Warranty
- Case: 403 Size: 159x97x38mm

Input Voltage Range.....	85~264VAC; 120~370VDC
Input Frequency.....	47-63Hz
Inrush Current.....	Cold Start, 25A/ 115VAC, 50A/ 230VAC
Output Adjustment Range.....	±10% Rated Output Voltage
Output Over Load Protection.....	110%~150% Hiccup Mode, Auto-recovery
Output Over Voltage Protection.....	115%~135% Rated Output Voltage
Output Short Circuit Protection.....	Hiccup Mode, Auto-recovery
Rise, Hold Up Time.....	50mS, 20mS at Full Load (Typical)
Hi-pot Isolation.....	I/P-O/P: 3KVAC, I/P-FG: 1.5KVAC, O/P-FG: 0.5KVAC
Operating Temperature Range.....	0°C to +50°C @ 100%, -10°C @80%, +60°C@ 60% Load



Storage Temperature Range..... -40°Cto +85°C , 0 to 95%RH (Non-Condensing)

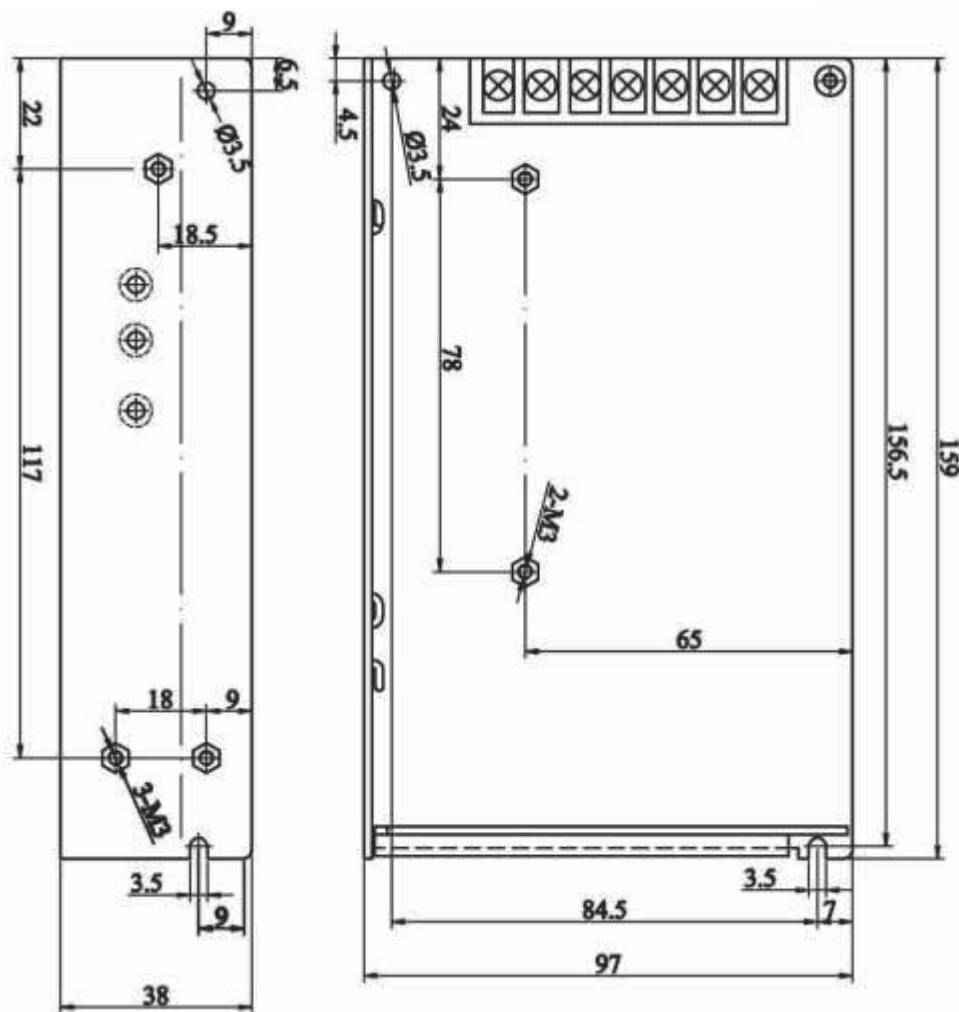
Safety Standards.....UL60950-1, TUV EN60950-1

EMC standards.....EN55022 class B, EN61000-3-2,3

EN61000-4-2,3,4,5,6,8,11,ENV50204

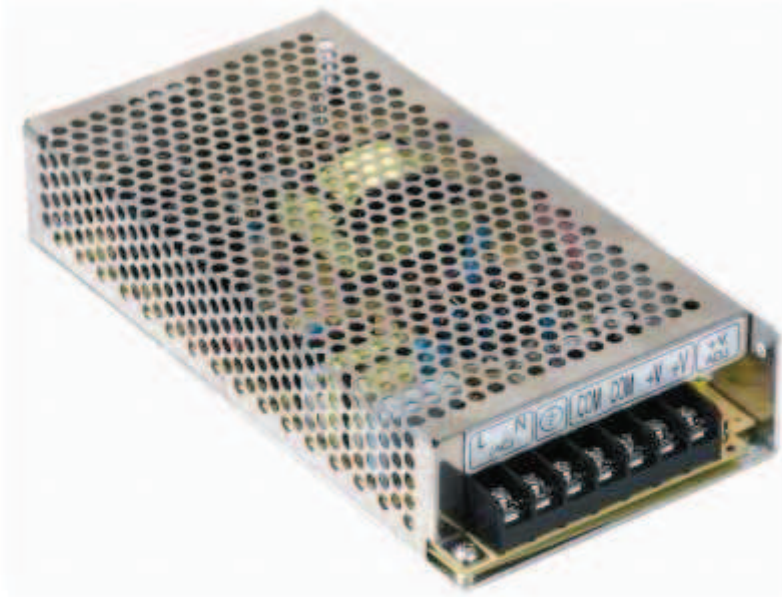
Cooling Method.....Free Air Cooling Convection

Product model	DC output	Load regul.	R&N	Efficiency
HTS-60F-5	5V, 0~12A	1%	100mV	73%
HTS-60F-12	12V, 0~5A	1%	120mV	77%
HTS-60F-15	15V, 0~4A	0.5%	150mV	78%
HTS-60F-24	24V, 0~2.5A	0.5%	150mV	81%





## HTS-100F



Product Model:HTS-100F

### Features:

- AC input range selectable by switch
- EMI Meets EN55022(CISPR22) Class B
- Low Power Consumption
- Approvals: UL/ CUL/ TUV/ CB/ CE
- Protections: Over Load/ Over Voltage  
Short Circuit
- 100% Full Load Burn-in Test
- 2 Years Warranty
- Case: 404 Size: 199x98x38mm

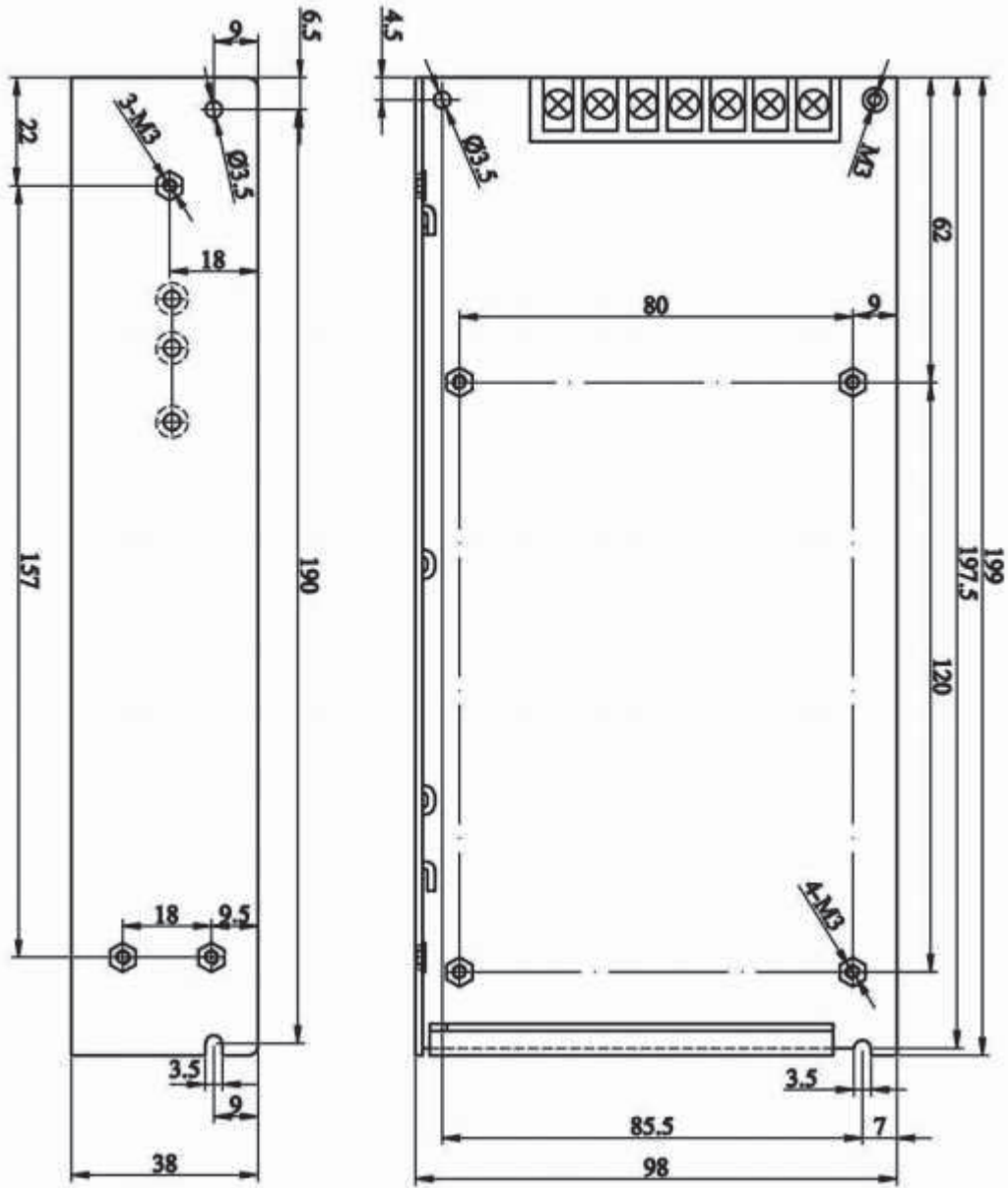
Input Voltage Range.....	88~132VAC/ 176~264VAC selectable by switch
Input Frequency.....	47-63Hz
Inrush Current.....	Cold Start, 25A/ 115VAC, 50A/ 230VAC
Output Adjustment Range.....	±10% Rated Output Voltage
Output Over Load Protection.....	110%~150% Hiccup Mode, Auto-recovery
Output Over Voltage Protection.....	115%~135% Rated Output Voltage
Output Short Circuit Protection.....	Hiccup Mode, Auto-recovery
Rise, Hold Up Time.....	50mS, 20mS at Full Load (Typical)
Hi-pot Isolation.....	I/P-O/P: 3KVAC, I/P-FG: 1.5KVAC, O/P-FG: 0.5KVAC
Operating Temperature Range.....	0°C to +50°C @ 100%, -10°C @80%, +60°C@ 60% Load
Storage Temperature Range.....	-40°Cto +85°C , 0 to 95%RH (Non-Condensing)





Safety Standards.....UL60950-1, TUV EN60950-1  
EMC standards.....EN55022 class B, EN61000-3-2,3  
EN61000-4-2,3,4,5,6,8,11,ENV50204  
Cooling Method.....Free Air Cooling Convection

Product model	DC output	Load regul.	R&N	Efficiency
HTS-100F-5	5V, 0~20A	1%	75mV	77%
HTS-100F-7.5	7.5V, 0~13.5A	1%	100mV	79%
HTS-100F-12	12V, 0~8.3A	0.5%	120mV	81%
HTS-100F-15	15V, 0~6.8A	0.5%	120mV	82%
HTS-100F-24	24V, 0~4.2A	0.5%	150mV	84%
HTS-100F-48	48V, 0~2.2A	0.5%	150mV	85%





## HTS-150F



Product Model: HTS-150F

### Features:

- AC input range selectable by switch
- EMI Meets EN55022(CISPR22) Class B
- Low Power Consumption
- Approvals: UL/ CUL/ TUV/ CB/ CE
- Protections: Over Load/ Over Voltage  
Short Circuit
- 100% Full Load Burn-in Test
- 2 Years Warranty
- Case: 405 Size: 199x110x50mm

Input Voltage Range.....	88~132VAC/ 176~264VAC selectable by switch
Input Frequency.....	47-63Hz
Inrush Current.....	Cold Start, 25A/ 115VAC, 50A/ 230VAC
Output Adjustment Range.....	±10% Rated Output Voltage
Output Over Load Protection.....	110%~150% Hiccup Mode, Auto-recovery
Output Over Voltage Protection.....	115%~135% Rated Output Voltage
Output Short Circuit Protection.....	Hiccup Mode, Auto-recovery
Rise, Hold Up Time.....	50mS, 20mS at Full Load (Typical)
Hi-pot Isolation.....	I/P-O/P: 3KVAC, I/P-FG: 1.5KVAC, O/P-FG: 0.5KVAC
Operating Temperature Range.....	0°C to +50°C @ 100%, -10°C @80%, +60°C@ 60% Load
Storage Temperature Range.....	-40°Cto +85°C , 0 to 95%RH (Non-Condensing)



Safety Standards.....UL60950-1, TUV EN60950-1  
EMC standards.....EN55022 class B, EN61000-3-2,3  
EN61000-4-2,3,4,5,6,8,11,ENV50204  
Cooling Method.....Free Air Cooling Convection

Product model	DC output	Load regul.	R&N	Efficiency
HTS-150F-3.3	3.3V, 0~30A	1.5%	100mV	72%
HTS-150F-5	5V, 0~30A	1%	100mV	78%
HTS-150F-7.5	7.5V, 0~20A	1%	100mV	80%
HTS-150F-9	9V, 0~16.5A	1%	100mV	80%
HTS-150F-12	12V, 0~12.5A	0.5%	120mV	82%
HTS-150F-13.5	13.5V, 0~11A	0.5%	120mV	83%
HTS-150F-15	15V, 0~10A	0.5%	150mV	84%
HTS-150F-24	24V, 0~6.5A	0.5%	150mV	85%
HTS-150F-27	27V, 0~5.6A	0.5%	200mV	86%
HTS-150F-48	48V, 0~3.1A	0.5%	200mV	87%





## HTS-320F



Product Model: HTS-320F

### Features:

- AC input range selectable by switch
- EMI meets EN55022(CISPR22) Class B
- Forced air cooling by built-in DC fan
- Cooling fan ON/ OFF auto control
- Protections: Over Load/ Over Voltage  
Over Temp/ Short Circuit
- 100% Full Load Burn-in Test
- 2 Years Warranty
- Case: 407 Size: 214x115x50mm

Input Voltage Range.....	88~132VAC/ 176~264VAC Selectable By Switch
Input Frequency.....	47-63Hz
Output Adjustment Range.....	±10% Rated Output Voltage
Output Over Load Protection.....	105%~135% Hiccup Mode, Auto-recovery
Output Over Voltage Protection.....	115%~145% Rated Output Voltage
Output Short Circuit Protection.....	Hiccup Mode, Auto-recovery
Rise, Hold Up Time.....	50mS, 20mS at Full Load (Typical)
Hi-pot Isolation.....	I/P-O/P: 3KVAC, I/P-FG: 1.5KVAC, O/P-FG: 0.5KVAC
Operating Temperature Range.....	0°C to +40°C @100%, -10°C @80%, +60°C @60% Load
Storage Temperature Range.....	-40°C to +85°C , 0 to 95%RH (Non-Condensing)
Safety Standards.....	UL60950-1
EMC standards.....	EN55022 class B, EN61000-3-2,3 EN61000-4-2,3,4,5,6,8,11,ENV50204
Cooling Method.....	Forced air cooling by built-in DC fan Cooling Fan ON/OFF Auto Control



Product model	DC output	Load regul.	R&N	Efficiency
HTS-320F-5	5V, 0~50A	1%	100mV	78%
HTS-320F-7.5	7.5V,0-36A	1%	100mV	81%
HTS-320F-12	12V, 0~25A	0.5%	120mV	83%
HTS-320F-13.5	13.5V, 0~22A	0.5%	120mV	84%
HTS-320F-15	15V, 0~20A	0.5%	150mV	85%
HTS-320F-24	24V, 0~12.5A	0.5%	150mV	87%
HTS-320F-27	27V, 0~11A	0.5%	150mV	87%
HTS-320F-36	36V,0~8.3A	0.5%	200mV	88%
HTS-320F-48	48V, 0~6.5A	0.5%	200mV	88%

